

Santo Deus, usa-me

Trompete

Cristina Mel

Tempo = 70

B F#m G#m G#m/F# E C#m/B F#m

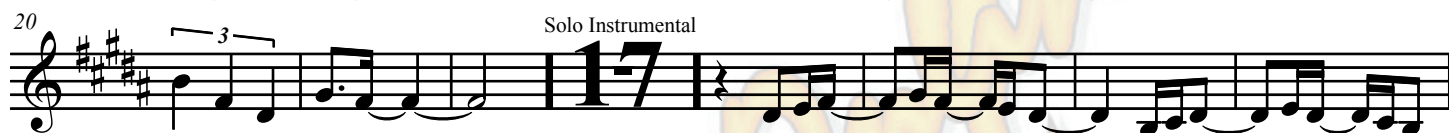
Introdução



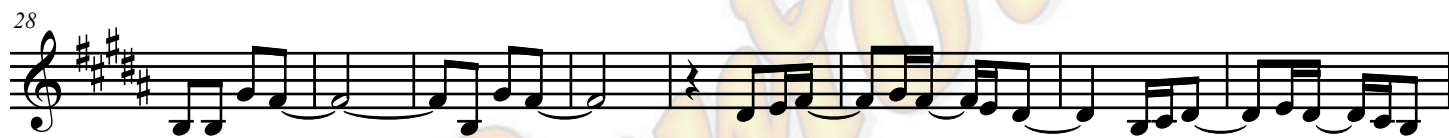
B F#m G#m E G#m/D# C#m7 E/F# F#m B/D# E



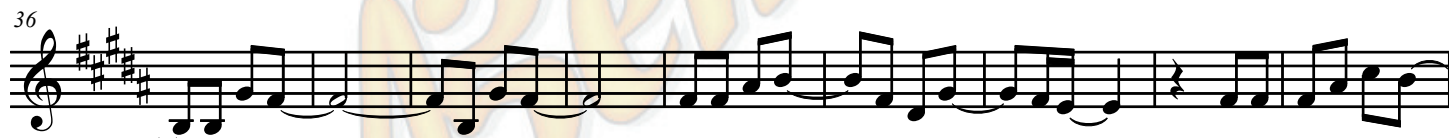
B/F# E/F# B F#m G#m/B B



E C#m B F#m G#m7/B B



E C#m F# B/D# E7M C#m7 F#



B/C# C#7 E B/F# F# B F#m G#m



B/F# E7M E6 F# E/G# B F#m G#m B/F#



E7M E6 F# F#6 G#m E/G# B/F#





Santo Deus, usa-me

2

69 F#m/E E F#m/E B F#m/A# G#m

77 G#m/F# E9 B/F# E/F# B F#m/A# G#m

85 G#m7/F# E9 B/C# F# B/D# E7M

93 C#m F# B/D# B/C# E B/F# F# B

101 F#m/A# G#m B/F# E7M E6 F# E/G# B F#m/A#

110 G#m B/F# E7M E6 F# F#6 G#m E/G#

118 B/F# F#m/E E B F#m/A# G#m

127 B/F# E7M E6 F# E/G# B F#m/A# G#m B/F#



Santo Deus, usa-me

3

136

E7M E 6 F# F#6 G#m E/G# B/F# F#/E

144

E F#/E

153

F#6 F#/E E F#/E

ACERVO INTERNO

Abemol Online

